




2018

---

## ANNUAL REPORT





Since incorporating in 1991, Skyline CAP has worked to ensure that we meet the needs of our clients and the communities we serve, and we continuously look for ways to help elevate our clients out of poverty and into stable, self-sustaining lifestyles.

When we talk about poverty, we are referring to the economic aspect of the word in which one lacks the means to provide basic personal needs. Poverty does not and should not reflect an individual's or a family's full potential. We serve many in poverty, and we will serve many with incomes below the area's median income and above what the federal government calls poverty. These folks live in our communities, they work in our businesses, and their children attend our schools. These families, especially their children, have the same potential as anyone in our community.

The last fiscal year, which ran from July 1, 2017 to June 30, 2018, saw many changes for Skyline CAP, including my appointment as

Executive Director in late March. As I settle into my role here, I am really excited about the progress we are making to grow our footprint in the communities we serve.

Skyline's mission focuses on two overarching themes, education and housing. Within education we have Head Start, Project Discovery and a new program, Healthy Families. Head Start continues to be an important preschool program for families that can't afford today's traditional high cost options. Children completing a year or two of Head Start enter our public schools on an equal footing and often better prepared than their classmates. We are seeing exciting growth in Project Discovery, which we will be able to report on more fully next year. Our

“Poverty does not and should not reflect an individual's or family's full potential. These families, especially their children, have the same potential as anyone in our community.”

Healthy Families program launched in July, and we are already helping new, inexperienced parents create strong, healthy and lifelong relationships with their children.

Housing continues to be an important service we provide for lower income families through the Housing Choice Voucher (HCV) program, Emergency Home Repairs (EHR), and counseling. We served nearly 300 households by administering the HCV program for HUD locally. EHR focuses on the elderly and those with disabilities, and we served a dozen families in fiscal year 2018. I hope to see that number grow substantially over the next few years. New to Skyline will be our 1st Time Homebuyer program, which will facilitate the building of homes priced for families with household incomes below the area's median income. These are our workforce families made up of

teachers, public servants, electricians, carpenters, etc., and these are the folks that have trouble putting a down payment together because of the high cost of housing or student loans or daycare costs. I anticipate being able to share significant progress in next year's annual report on how we are helping these young families experience homeownership.

Here at Skyline, we strive to help the underserved realize a more sustainable life, and for youth to have the opportunity to achieve their real potential. This is an important role and one that is made possible through your continued support.

Thank you.



**Fran Lavin**  
**Executive Director**



# The Promise of Community Action

Community action changes people's lives, embodies the spirit of hope, improves communities and makes America a better place to live. We care about the entire community, and we are dedicated to helping people help themselves and each other.



# Skyline CAP Vision & Mission

## OUR VISION

To strengthen our communities by improving the lives of those in need through actions promoting self-sufficiency. We seek to eliminate the impact of poverty by focusing on education, housing stability and economic opportunities.

## OUR MISSION

All people within the Skyline CAP service area will have access to education, housing, economic opportunities and services necessary to become self-sufficient.

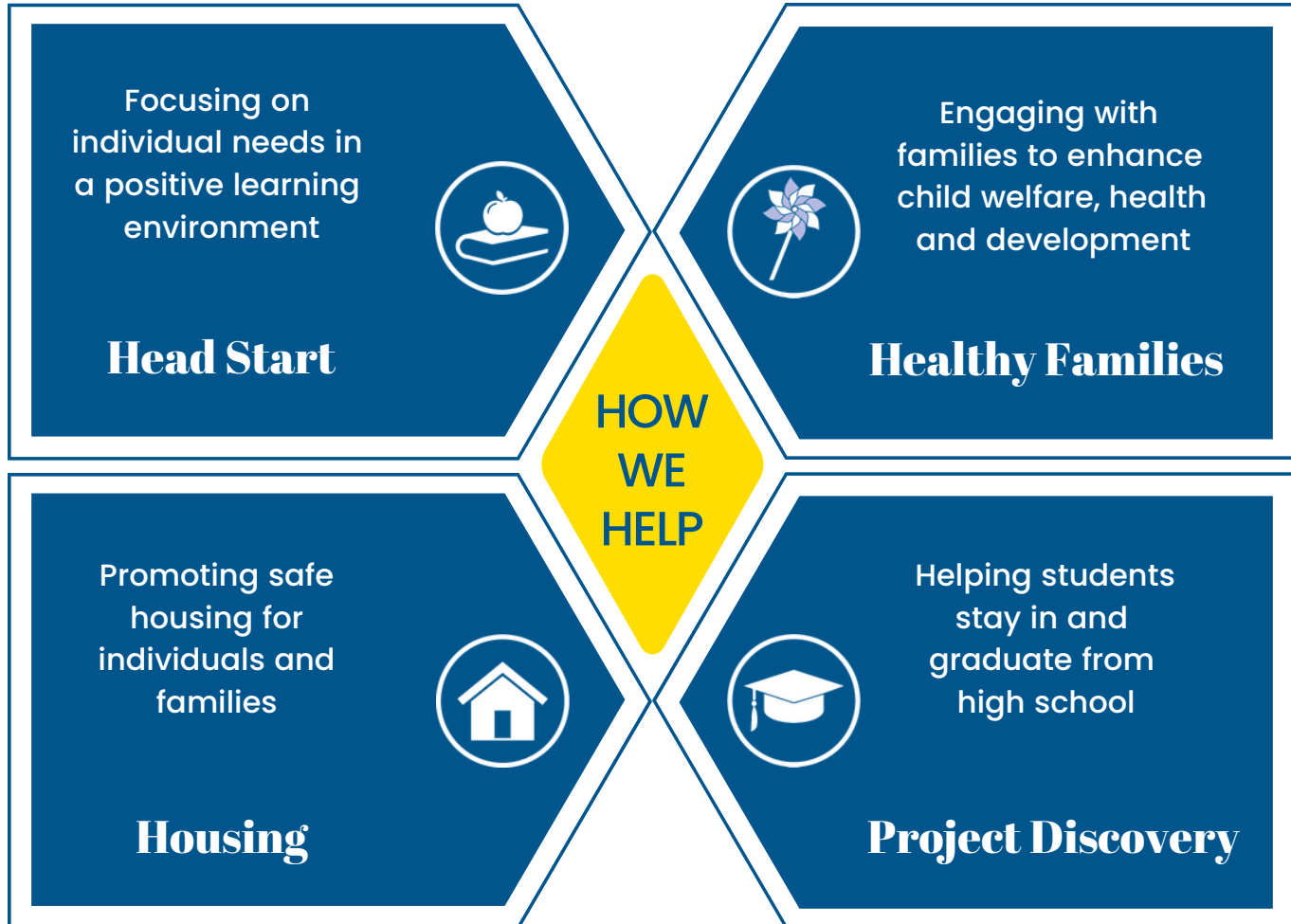
## About Us

Skyline CAP, Inc., is a non-profit community action agency (CAA) designated by the Governor of Virginia and approved by the localities it serves to provide resources that promote self-sufficiency. A designated CAA for Greene, Madison and Orange counties, Skyline CAP extends many of its programs to the counties of Fauquier, Page, Rappahannock, Shenandoah and Warren.

Incorporated in 1990, the agency offers education and housing programs designed to empower families and individuals to become self-sufficient. Over the 12 months that represent the fiscal year outlined within this report, our programs served more than 500 families and 1,600 individuals. During this time, we also initiated processes to expand our programs to enhance child welfare, health and development through Healthy Families, and to offer affordable housing to first-time home buyers.

Skyline CAP is located in Madison, Va., and has offices in Greene and Fauquier counties. The agency is one of 31 community action agencies in Virginia and more than a thousand across the country.





# Head Start



Skyline CAP Head Start provides a preschool environment built on a happy, healthy, safe and secure foundation of learning and involvement designed to help children and their families become successful in the future. In the 2017-18 school year, the program operated in six counties and provided 225 three- and four-year-old children with an early childhood education that helped develop their confidence through a strong sense of self-worth and self-esteem, readying them for kindergarten.

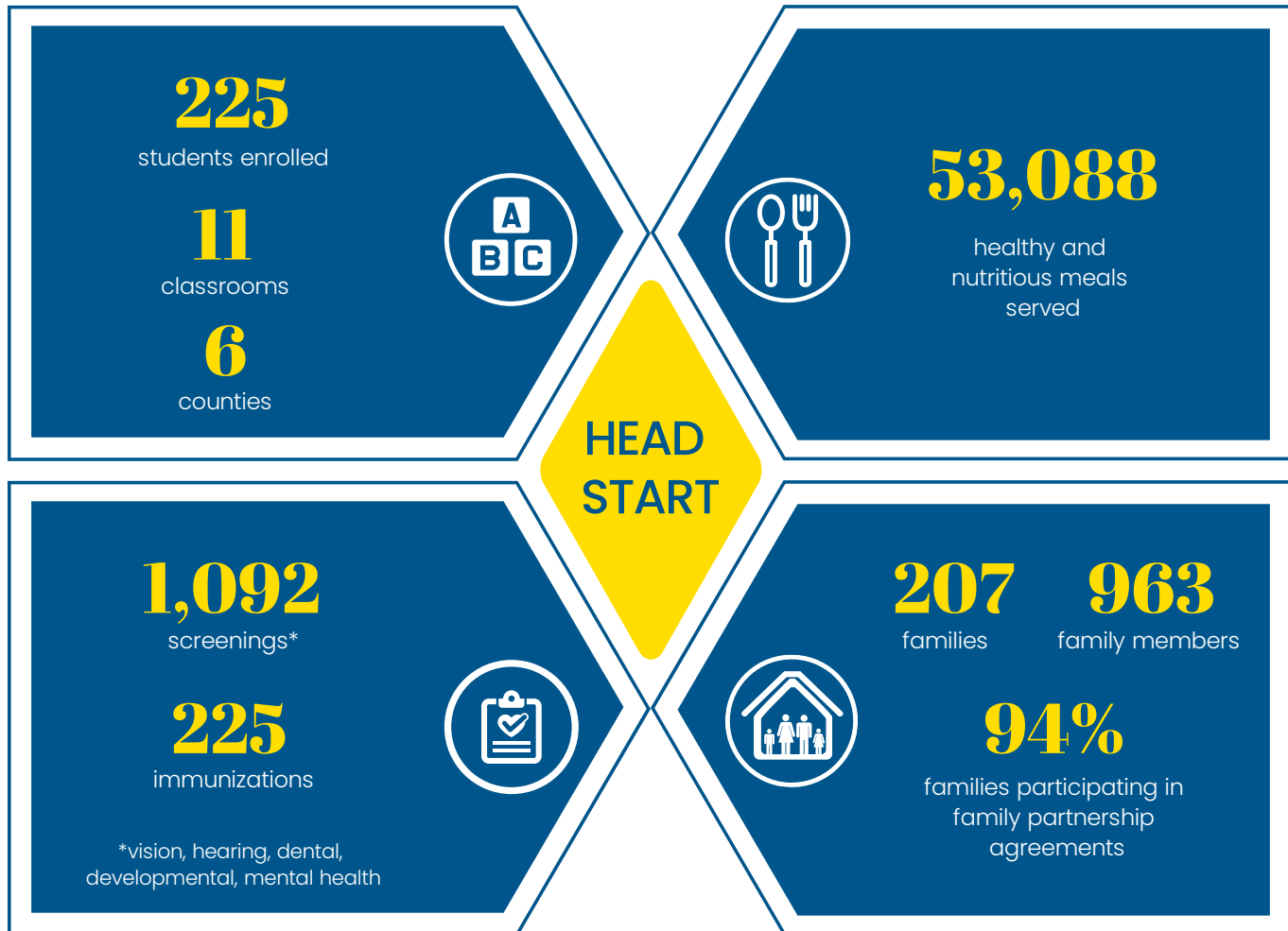
Head Start takes a comprehensive approach in order to meet the needs of both the child and the family. Parents are their children's first and most important teachers, and leadership in our Head Start program is a shared responsibility between staff and parents. Training and empowerment is emphasized to help parents become effective partners in their child's education and development. Strategies are developed with each family to support

movement toward self-sufficiency by setting goals to build on strengths and through links with community resources. Collaboration partnerships with public schools, community agencies and other groups are in place to help meet the needs of children and their families.

Head Start staff members work as a team with the same goals and the same mission to support the program's overall vision. Efforts to achieve this vision are fun and rewarding!

“The program operated in six counties and provided 225 three- and four-year-old children with an early childhood education that helped develop their confidence through a strong sense of self-worth and self-esteem, readying them for kindergarten.”





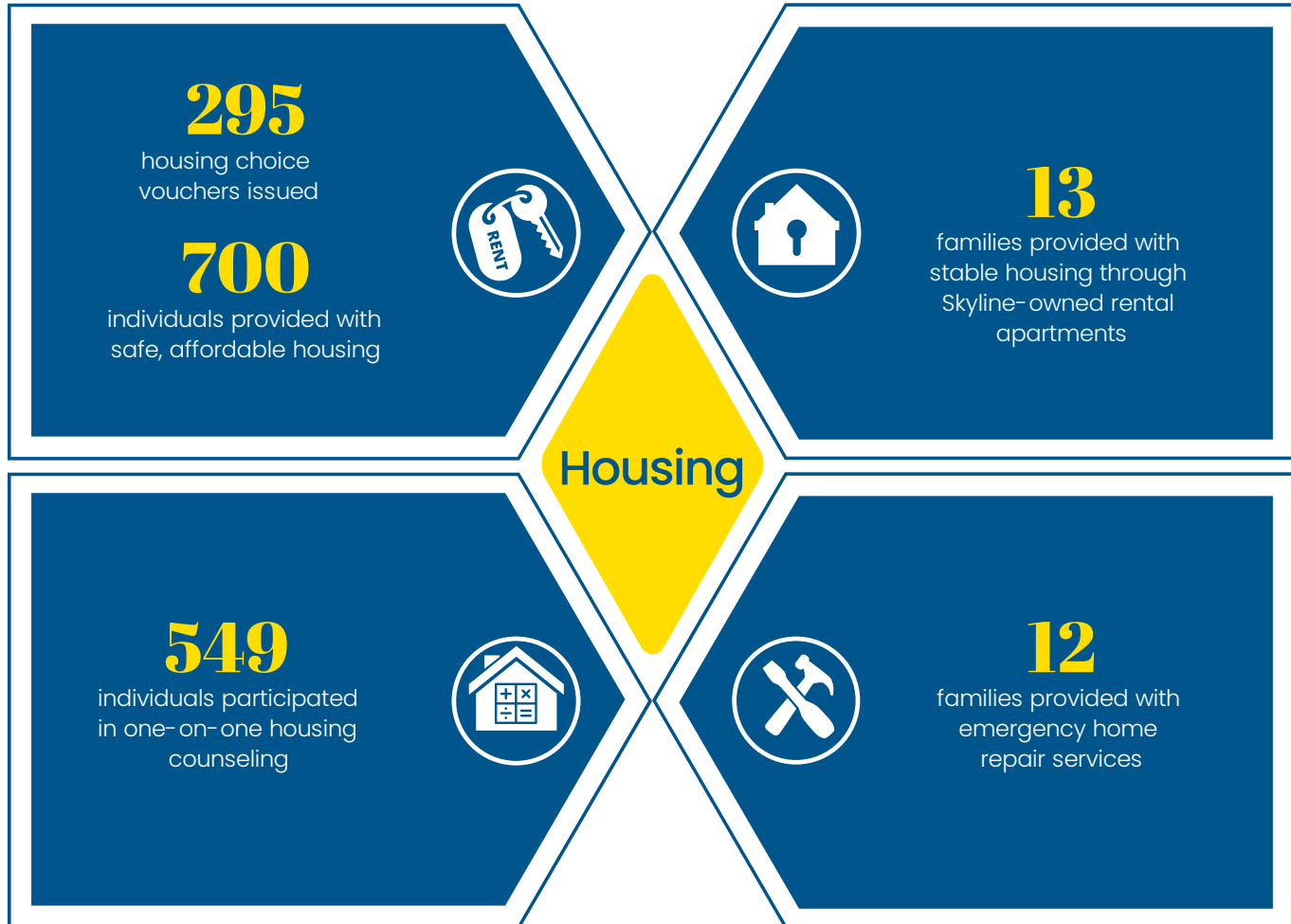
# Housing

Access to affordable housing options is a critical aspect of family stability and financial health, and affects health and well-being as well as the ability to become self-sufficient. Addressing this need is a priority for Skyline CAP's housing programs and services, which are offered in Greene, Madison and Orange counties.

In partnership with the Virginia Housing Development Authority (VHDA), Skyline CAP helps provide safe and affordable rental housing to qualifying families and individuals through the Housing Choice Voucher Program. In 2017-2018, Skyline issued 295 vouchers, which allowed households to choose their housing as long as it meets certain health and safety codes. Skyline CAP also offers 13 rental housing units in Greene and Madison counties. HUD-certified counselors are also available to help renters understand their rights as a tenant.

Skyline CAP's Emergency Home Repair Program provided services to 12 households in FY 2018. Services addressed a wide range of health and safety issues, including plumbing and roof repairs, replacement of doors and windows and installation of wheelchair ramps.

In the coming year, Skyline plans to increase the number of housing vouchers issued and emergency home repairs completed. In addition, an affordable workforce housing program will be launched to support home ownership for workers who provide essential services in the community, including teachers, nurses and public servants. Satisfying this need is important for these individuals and their families, and it is also important for the strength of our local economy which depends on the ability to attract and retain workers who provide these crucial services.



# Project Discovery

During FY 2018, Skyline CAP offered the Project Discovery program to middle and high school students in Madison County, with the goal of encouraging them to prepare for life beyond high school by looking at opportunities for post-secondary education, including technical schools as well as college. The program included after school workshops that helped students navigate the college admissions process and included visits to college and university campuses. Three high school seniors graduated from the program in May; two were accepted to community colleges and one received a paid apprenticeship with a local company.

In FY 2019, the program will be expanded to include students from Orange County Public Schools and will focus on helping students

overcome issues that might otherwise prevent them from graduating from high school. Students will continue to receive resources to help them explore options for life after high school.

“...helping students overcome issues that might otherwise prevent them from graduating from high school.”

More information on Project Discovery can be found at [www.projectdiscovery.org](http://www.projectdiscovery.org).

# Healthy Families

During the year, Skyline CAP began to explore ways to expand our programs and services in order to help more people in need in the communities we serve. An opportunity to administer the Healthy Families program became available and Skyline's Board of Directors deemed it a good fit within the organization's mission.

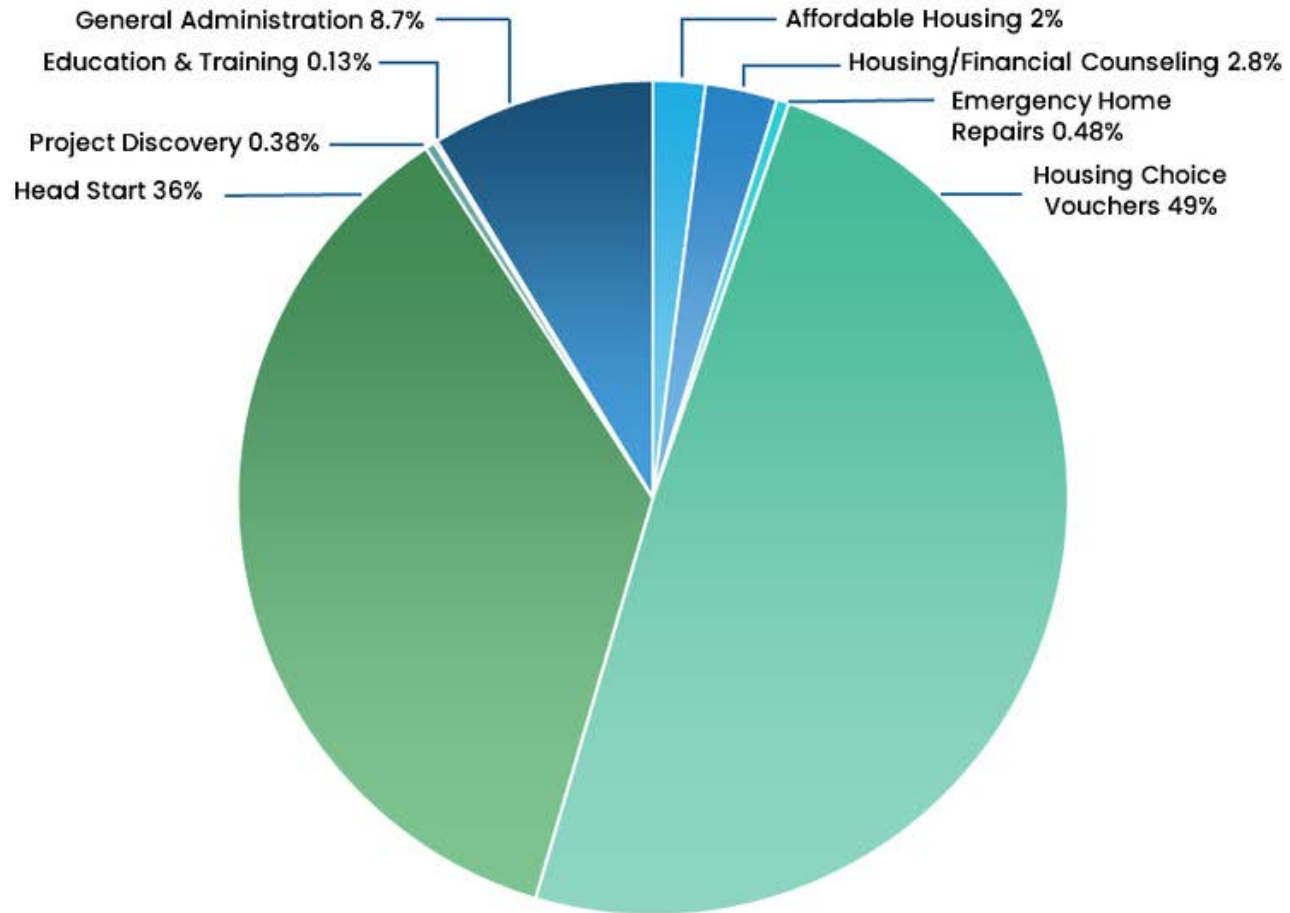
Healthy Families is a voluntary home visit program that focuses on enhancing child welfare, health and development using a relationship-focused approach that promotes positive parenting skills and parent-child interaction and attachment, optimal prenatal care, child health and development and enhanced family self-sufficiency to create safe, stable and nurturing relationships and environments.

The program is designed to operate as a system of care that collaborates to support families. Expectant parents are referred by the Department of Social Services and health departments and matched with a dedicated Family Support Specialist who works directly with them in their homes. Visits typically begin prior to birth or within three months of birth and are offered until the child's third birthday, and preferably until the child's fifth birthday.

The program officially launched in July 2018 and serves a four-county area including Fauquier, Madison, Orange and Rappahannock. It is supported by the Commonwealth of Virginia, Healthy Families Initiative, Virginia Department of Social Services.



## FY 2018 Economic Impact: \$4,008,198



# Our Partners

The programs offered by Skyline CAP are possible thanks to generous financial and in-kind support from our partners who share our vision of helping others become self-sufficient.

American Woodmark Foundation, Inc.

Automated Office Systems

Bama Works

Blue Bell Foundation

Charlottesville Area Community Foundation (CACF)

County of Greene

County of Madison

County of Orange

Fauquier County DSS

Head Start

Housing Opportunities Made Equal (HOME)

Madison County Dept. of Social Services

Martha Jefferson Hospital Dental Care

Northern Piedmont Community Foundation

Page County Public Schools

Path Foundation

Rappahannock County Public Schools

Rappahannock Electric Cooperative

Robinson, Farmer, Cox Associates

Shenandoah County Public Schools

Temporary Assistance for Needy Families (TANF)

Thomas Jefferson Planning District Commission

U.S. Dept. of Health & Human Services

U.S. Dept. of Housing & Urban Development (HUD)

U.S. Dept. of Agriculture (USDA)

Virginia Dept. of Social Services

Virginia Housing Development Authority (VHDA)

Virginia Dept. of Housing & Community Development

Virginia National Bank

Warren County Public Schools

Wells Fargo Foundation

# Board of Directors

Jonathon Weakley, President

Delano "Dink" Kreis, Vice President

Kerri Banks, Secretary

Jerry Butler, Treasurer

Lorraine Goldberg

James Leffel

John Shanley

Peter Work

## Staff

### Administrative

Fran Lavin, Executive Director

Carty Yowell, Finance Director

Diane Rosson, Human Resources Director

Peggy Hobbs, Marketing & Resource Dev. Manager

Mikayla Gardiner-Alger, Accounting Assistant



## Healthy Families

Shelley Hensley, Supervisor

Kimberly Rose, Family Support Specialist -  
Madison & Orange counties

Juliana Schlunz, Family Support Specialist -  
Fauquier County

Victoria Walbroehl, Family Support Specialist -  
Rappahannock County

## Housing

Rachel Henderson, Director

Jack Campbell, Housing Quality Standards Inspector

Rosemary Lysczek, Housing Counselor

Lauren Taylor, Housing Counselor

## Project Discovery

Simon Fiscus, Director



# Head Start Policy Council

Patricia Jeffries, Chair

Kerri Banks, Vice- Chair

Allan Brown, Secretary

Lorraine Goldberg, Treasurer

Rev. David LeFon, Parliamentarian

Amanda Bishop

Lynne Blythe

Whitney Coffee

Jenny Dunivan

Thomas Jeffries

Dana Oldaker

Amanda Racer

Ashley Rhodes

Amber Reynoso

JoAnn Thiel

Amber Bench Williams

## Head Start Administrative Staff

Simon Fiscus, Head Start Director

Sara Andrew, Education Manager

Gunnar Cain, Health Manager

Vanessa St. Louis, Operations Coordinator

## Head Start Family Advocates

Fay Butcher, Family Advocate Manager

Monica Etter, Family Advocate

Milca Griffith, Family Advocate

Becky Thorpe, Family Advocate





## Head Start Teaching Staff

### Greene County Head Start

**Classroom 01** Jade Jenkins, Teacher  
Stephanie Girard, Teacher Asst.

**Classroom 02** Mariel Lewis, Teacher  
Amanda Bagley, Teacher Asst.

### Madison County Head Start

**Classroom 01** Kathy Lillard, Teacher  
Connie Weakley, Teacher Asst.

**Classroom 02** Amanda Letson, Teacher  
Julia Burke, Teacher Asst.

### Page County Head Start

**Classroom 01** Kevin Holcombe, Teacher  
Jennifer Hensley, Teacher Asst.

**Classroom 02** Shawnacee Wilkerson, Teacher  
Fonda Weaver, Teacher Asst.

### Rappahannock County Head Start

**Classroom 01** Charity McClung, Teacher  
Adrienne Grant, Teacher Asst.

### Shenandoah County Head Start

**Classroom 01** Lacey Crouch, Teacher  
Sally Manich, Teacher Asst.

**Classroom 02** Renee Hertzler, Teacher  
Tara Rhode, Teacher Asst.  
Jamie Noel, Nutrition Aide

### Warren County Head Start

**Classroom 01** Cathy Kramer, Teacher  
Grace Carter, Teacher Asst.

**Classroom 02** Robin Spencer, Teacher  
Tina Litwin, Teacher Asst.



532 S. Main Street

P.O. Box 588

Madison, VA 22727

540.948.2237

[skylinecap.org](http://skylinecap.org)

