

Helping people.



Changing lives.

**SKYLINE COMMUNITY
ACTION PARTNERSHIP
FY22 ANNUAL REPORT**

**THIS PAGE INTENTIONALLY
LEFT BLANK.**

TABLE OF CONTENTS

01

Executive Director's Message

03

About Skyline CAP

05

History of Skyline

07

**Board of Directors and Head
Start Policy Council**

08

Partners

09

Clients

10

Head Start

11

Healthy Families

12

Housing

13

Project Discovery

14

CARES Act

15

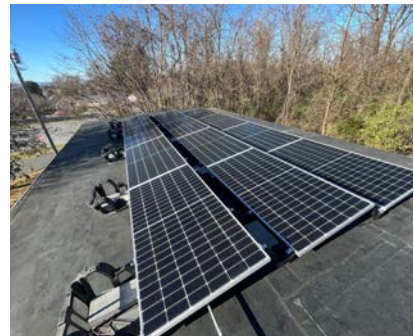
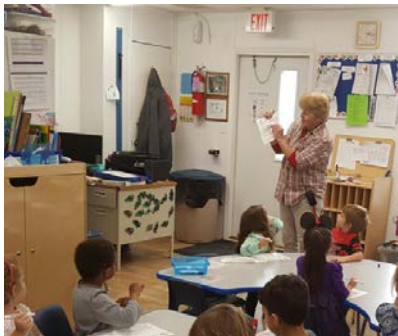
Financial Operations



FROM THE DIRECTOR

The start to our fiscal year in July 2021 was much like the start to the previous year, with concerns about COVID-19 still at the forefront of everyone's minds. It appears that this will become the norm and while we continue to address the challenges it brings, I would like to focus on the many positive changes and accomplishments we experienced during the year, including:

- Continuing to work to expand affordable housing opportunities by starting construction on two new single-family homes in Stanardsville and by securing a grant that would allow us to purchase an existing apartment building behind our Madison administrative office;
- Expanding our Healthy Families program to include a child welfare component and a safety program;
- Evaluating and restructuring programs to make sure we had the right people in the right positions and to ensure coverage of any gaps in service;
- Installing solar panels on three of our Head Start classrooms for energy efficiency;



-
- Fully staffing our tripartite board of directors with 15 members;
 - Completing work on a five-year strategic plan;
 - Donating surplus computer equipment to area high school seniors planning to head to college in the fall; and
 - Streamlining administrative processes, implementing a new timekeeping process, and participating in a project to digitize years of housing files.

Skyline CAP is fortunate to have a talented team of employees dedicated to helping change the lives of people in need, and you'll read more about their work in the pages ahead. Yes, we experienced a few speedbumps during the year, but we were able to overcome the challenges and make real progress. I am pleased with the progress we made this year, and I'm so proud to be part of this great organization.

I am looking forward to the coming year and completing the projects we started while also identifying new opportunities in the communities we serve.

Kind regards,

Simon C. Fiscus
Executive Director



ABOUT SKYLINE CAP

Skyline CAP, Inc. is a non-profit community action agency (CAA) designated by the Governor of Virginia and approved by the localities we serve to provide resources that combat poverty. Our programs are focused on helping people, changing lives, and strengthening our communities by providing access to education, housing, and economic opportunities.

Our Programs

Head Start

A preschool program focusing on language and literacy, cognition, social-emotional development, and general knowledge.



Healthy Families

A nationally-accredited home visitation program helping parents create strong, lifelong relationships with their children.



Housing

Services that promote safe, affordable housing, including housing counseling, affordable housing, rent assistance, and emergency home repairs.



Project Discovery

An educational outreach program providing students with tools and resources they need to realize their goals for post-secondary education.



Our Mission

To strengthen our communities by improving the lives of those in need through actions promoting self-sufficiency. We seek to eliminate the impact of poverty by focusing on education, housing stability and economic opportunities.

Our Vision

All people within the Skyline CAP service area will have access to education, housing, economic opportunities and services necessary to become self-sufficient.

Our Goals

1

Low-income families and individuals achieve greater stability and economic security.

- Develop program capacity to address needs in the community by seeking out and taking advantage of available resources.

2

Skyline CAP is a trusted resource in the community.

- Expand support for other needs identified in the community.
- Increase awareness of the services offered by Skyline CAP.
- Increase awareness of available housing opportunities.

3

Skyline CAP maintains a culture of operational excellence to support sustainable operations and increased capacity.

- Maintain financial stability and accountability to ensure viability.
- Recruit and maintain a skilled and proficient workforce that feels valued and invested in Skyline CAP's mission and vision.
- Implement continuous improvement activities to ensure sustainable operations and effective programs that support client needs.

OUR HISTORY

Skyline CAP is one of more than one thousand community action agencies across the U.S. Incorporated in 1990, we have been serving the low-income population in our communities for more than 30 years.



1983

Greene County Community Development created to provide transportation services to seniors.



1990-1991

Skyline CAP incorporates to become first community action agency in Greene County. Madison County added in 1991. Head Start grant and Section 8 services acquired for Madison and Greene counties.



1992

Head Start grant received to provide services in Page, Rappahannock, Shenandoah, and Warren counties.



1999

Skyline CAP begins offering Project Discovery in Madison County. Agency opens thrift store in Greene County.



2000

Service area expands into Orange County. Skyline CAP begins offering Emergency Home Repair and Emergency Services programs.



2008

First major HOME project completed in Greene County, replacing three condemned homes for owners.



2009

Administrative office purchased in Madison. Agency aligns with nationally-recognized Community Action Partnership. Federal budget cuts force discontinuation of transportation services for Head Start. Thrift shop in Greene moves to larger location. New thrift store and satellite office opens in Orange.



2010


Two buildings purchased to provide 5 affordable housing units in Greene County. Skyline CAP Head Start expands to Page county and adds second classroom in Warren County.



2011

Head Start program receives grant to provide social-emotional services.

OUR HISTORY (continued)

- 
- 2013**
Emergency assistance services discontinued.
- 2014**
Skyline closes office in Orange, thrift shops in Greene and Orange counties.
- 2015**
Two buildings purchased to provide 4 units for affordable housing in Madison County.
- 2016**
Renovations completed to provide enhanced teaching and working environments in its Head Start classrooms and offices.
- 2018**
Healthy Families program launched in Fauquier, Madison, Orange and Rappahannock counties. Project Discovery expands to Orange County High School and middle school in Madison. Head Start purchase new classroom and parenting curriculum with child assessment services. Head Start services discontinued in Rappahannock County.
- 2019**
Land purchased in Stanardsville for construction of two homes. Healthy Families begins offering on-line curriculum option to clients.
- 2020**
COVID-19 pandemic closes Head Start classrooms, halts Project Discovery services, and Healthy Families converts to virtual visiting program. Face-to-face interaction limited; all meetings conducted virtually. Head Start classrooms reopen in fall at half-capacity.
- 2021**
Skyline partners with community foundations to distribute CARES Act funds to 11 nonprofits impacted by COVID-19 in Greene, Madison, and Orange counties. Head Start program receives grant to support training for teacher-child observation. Project Discovery program resumes in Madison County.
- 2022**
Healthy Families adds child welfare component and safety program. Skyline renames Jack Russell apartments in Greene County to Jack Naylor Apartments. Construction completed on two new homes to expand affordable housing options in Greene County. Grant received to purchase 5-unit apartment building in Madison as well as buildings to serve as office and training spaces.

SKYLINE CAP BOARD OF DIRECTORS 2021-2022

John Shanley, President

Rebecca Phillips, Vice President

Melanie Burch

Pamela Frederick

Keisha Gourdine-Arnold

Hannah Herndon

Christine Inscoe

James Jewett

Frank Berry, Treasurer

Kerri Banks, Secretary

Daryl Neher

Bruce Seger

Kathryn Thomas

Alisha Vines

Peter Work

SKYLINE CAP HEAD START POLICY COUNCIL - 2021-2022

Kerri Banks, Chairperson

Peggy Haluska, Vice Chair

Crystal Kerns, Parliamentarian

Jennifer Dufner

Amber Frazier-Shiflett

Michael Hirsch

Courtney Miller

Katie Proper

BJ Stout Ritter

Lisa Seal

Taylor Smith

Vivian Utz

Vicky Williams



OUR PARTNERS

The work we do here at Skyline CAP would not be possible without the support of our partners and friends in the community. From financial, in-kind, and program support to assistance with referrals and outreach efforts, their help is invaluable to us when it comes to accomplishing our mission. We are fortunate to have these relationships and greatly appreciate everything they do for us, our clients, and our communities.

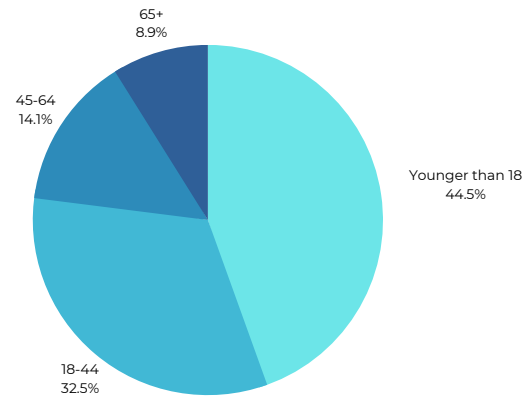
FY 2021 PARTNERS

Albemarle Housing Improvement Program (AHIP)
American Woodmark Foundation, Inc.
Bama Works
Blue Ridge Presbyterian Church
Charlottesville Area Community Foundation
County of Fauquier
County of Greene
County of Madison
County of Orange
County of Rappahannock
Culpeper Wellness Foundation
Fauquier County Department of Social Services
Fauquier County Public Schools
Fauquier Free Clinic
Fauquier FISH
Fauquier Habitat for Humanity
Fauquier Hospital Family Birthing Center
Feeding Greene
GRACE
Greene Care Clinic
Greene County Habitat for Humanity
Greene County Public Schools
Healthy Families America
HOME (Housing Opportunities Made Equal)
JABA
Jefferson Land & Realty
LOVE Outreach
Lowe's
Madison County Child Protective Services
Madison County Dept. of Social Services
Madison County Public Schools
Madison Emergency Services Association (MESA)
Madison Free Clinic

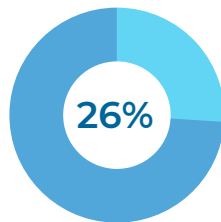
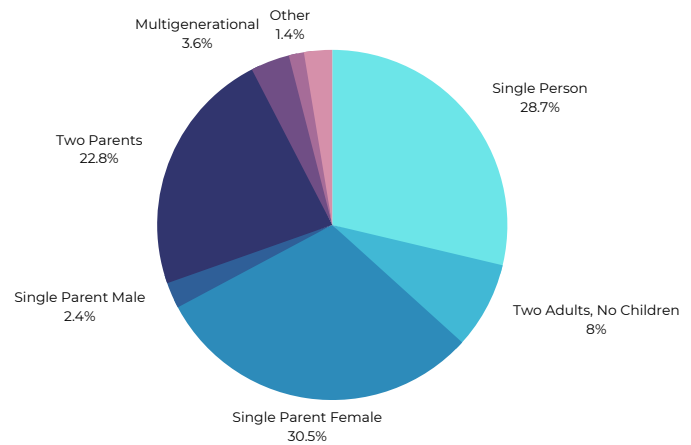
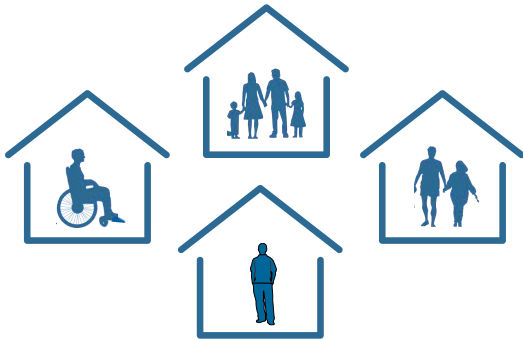
Madison Learning Center
Marietta & Samuel Morgan, Jr. Trust
Neighbors in Need
Northern Piedmont Community Foundation
Orange County Department of Social Services
Orange County Free Clinic
Orange County Office on Youth
Page County Public Schools
PATH Foundation
Paul Davis Restoration
Paul Stefan Home
Piedmont Pediatrics
Piedmont Regional Dental Clinic
Project Discovery of Virginia
Rappahannock Department of Social Services
Rappahannock-Rapidan Community Services Board
Rappahannock-Rapidan Health District
Rappahannock-Rapidan Infant Toddler Connection
Rappahannock-Rapidan Regional Commission
Robinson, Farmer, Cox Associates
Shenandoah County Public Schools
TANF (Temporary Assistance for Needy Families)
Thomas Jefferson Planning District Commission
U.S. Dept. of Health & Human Services
U.S. Dept. of Housing & Urban Development
U.S. Dept. of Agriculture
Virginia Department of Social Services
Virginia Housing
Virginia Office of Economic Opportunity
Walmart
Warren County Public Schools
Warrenton Pediatrics
Warrenton Pregnancy Center

OUR CLIENTS - FY2022

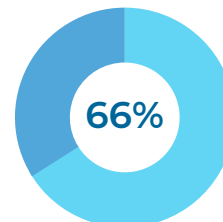
1,535
INDIVIDUALS



499
HOUSEHOLDS



Households served living at or below 50% of the federal poverty level
(\$13,875/year for a family of 4)



Households served living at or below 100% of the federal poverty level
(\$27,750/year for a family of 4)

HEAD START

More than a half-century ago, President Lyndon B. Johnson declared a war on poverty and spurred action to create a child development program to support disadvantaged preschool children in an effort to break the cycle of poverty. Started as an eight-week demonstration project in 1965, Head Start offered a comprehensive program to meet the emotional, social, health, nutritional, and education needs of low-income children and their families. Since that time, Head Start has evolved and expanded to serve more than one million children and their families each year.

At the local level, Skyline CAP receives funding to enroll 179 children in its Head Start program, which is offered to 3- and 4-year-old children and their families in Greene, Madison, Page, Shenandoah, and Warren counties at no cost. The program promotes school readiness through a positive learning environment that supports growth in language and literacy, cognition, social-emotional development, and general knowledge. Children also receive a healthy breakfast and lunch each day as well as free health and developmental screenings. Skyline CAP Head Start is committed to building relationships with the family to support overall well-being and help break through the barriers of generational poverty.

Skyline CAP Head Start uses a research-based, dual-language curriculum. Children are assessed three times each year in five education domains: literacy and language, perceptual motor and physical development, cognition and math development, approaches to learning, and social-emotional skills. Assessments are conducted separately by age group in the fall, winter and spring.



HEALTHY FAMILIES

Parenting in today's world has become more challenging than ever, leaving many families struggling to cope. Skyline CAP offers the Healthy Families program to help in addressing this issue. A national evidence-based home visiting program, Healthy Families supports families and their children from before birth to age five. Families are screened using a comprehensive psycho-social assessment vetted at the national level to identify early childhood trauma, life stressors, coping skills, parenting styles and family goals to form the basis of a Family Service Plan, equipping parents with the tools and resources needed to create strong, lifelong relationships with their children. Skyline CAP has offered this voluntary program to families in Fauquier, Madison, Orange, and Rappahannock since 2018,

Child Welfare Providers have long recognized the benefits for vulnerable families in receiving intensive home-visitation services like Healthy Families to inspire change for families in distress and to ultimately protect the children at the center of those families. In 2021, the Skyline CAP board of directors voted to add Child Welfare Protocols to the program's existing guidelines, which was approved by Healthy Families America in February 2022. Families referred through the Child Welfare System can enroll with a child up to 24 months of age, and support services will be offered for a minimum of three years regardless of the child's age at intake. Each family referred by Child Protective Services is assessed by the Family Resource Specialist and, if eligible to receive services, is connected to a Family Support Specialist. Support is tailored to the needs of the family.

Recognizing that many of our participants do not have basic knowledge of infant and child safety nor the means to purchase items to keep their child safe, in spring of 2022 Skyline CAP's Healthy Families program created a new program called SAFE (Safety Advances Family Empowerment) to provide safety items and training to parents in need. The program received funding from Northern Piedmont Community Foundation's Community Assistance Grant and Culpeper Wellness Foundation, along with matching funds from Skyline, and the program was launched in July 2022.



HOUSING

Access to safe and affordable housing is a basic necessity one cannot take for granted. The stability it provides is essential for family well-being, and it allows more of the family budget to be spent on other essential needs such as food, medicine, and clothing.

Skyline CAP administers the Housing Choice Voucher (HCV) Program for our area in support of this need. Through the program, voucher holders rent housing where they desire if the home meets health and safety codes as determined by the U.S. Department of Housing and Urban Development (HUD). The voucher covers a portion of the rent using a sliding scale, and the tenant pays the balance. Eligibility for the HCV program is primarily based on income. Seniors and people with disabilities are given preference. Households must certify their income every year for continued participation. Annual inspections are made of the properties to ensure dwellings meet housing quality standards set forth by HUD. In 2022, Skyline CAP expanded its program by agreeing to take on additional vouchers for Louisa County due to the discontinuation of the program there.

In April 2021, Skyline CAP broke ground on two new single-family homes in the town of Stanardsville in Greene County. Originally intended to be part of a First-Time Homebuyer program, Skyline CAP's board of directors later voted to keep the homes as affordable rentals. After overcoming a few challenges, including having to relocate a previously undisclosed gas line, the homes were nearing completion by the end of the fiscal year. The project was funded through the HOME Investment Partnerships Program (HOME) offered through HUD to expand the supply of affordable housing for low-income Americans. Funds were distributed by Thomas Jefferson Planning District Commission.

This was a big year for expanding affordable housing opportunities in our service area. After securing a grant from Rappahannock-Rapidan Regional Commission (RRRC), Skyline purchased a five-unit apartment building formerly known as Barbara's House from Madison Emergency Services Association (MESA). The deal was set to close in July 2022 with plans to renovate a common area into a sixth studio apartment and add washer/dryer combos to each unit. In addition to the apartments, Skyline CAP purchased the office building next door to its Madison administration office, also owned by MESA, and plans to move some of its offices to that location in 2023.



PROJECT DISCOVERY

Project Discovery is an educational outreach program designed to help middle and high school students continue their education following graduation from high school. Many students who participate in the program are first-generation college-bound students who learn valuable skills and experience opportunities that might not otherwise be available to them.

In 2021-2022, Skyline CAP offered the Project Discovery program to students in 6th through 8th grade at William Wetsel Middle School. The students were engaged in activities that helped them improve study habits and learn time management and financial planning skills. While participants typically travel to college campuses during the year, Skyline CAP's participants attended Verdun Adventure Bound in Rixeyville, VA, where they participated in teambuilding activities where communication and problem-solving skills came into play.



CARES ACT FUNDING

During the ongoing COVID-19 pandemic, the Coronavirus Aid, Relief, and Economic Security (CARES) Act provided assistance for American workers, families, small businesses, and industries. Distribution was handled in a number of ways, including distribution of funds to community action agencies. In the spring of 2021 and with the help of Charlottesville Area Community Foundation and Northern Piedmont Community Foundation, Skyline CAP used this funding to issue \$193,117 in grants to 11 nonprofit organizations in Greene, Madison, and Orange counties.

Unable to conduct fundraising activities due to pandemic restrictions, many of the organizations needed the funds to cover agency expenses. Others used the grant funding to provide direct services to individuals and families impacted by COVID-19, including job loss, illness, and the need to stay home with children participating in virtual learning. Agency needs included purchase of supplies and equipment to meet increased demand for services and facility and payroll expenses. Families in need received direct assistance with basic needs including food, housing, utility, and transportation expenses, daycare expenses, medical and dental care, and mental health assessments and counseling. In all, more than 1,800 individuals in need received direct assistance as a result of these funds.



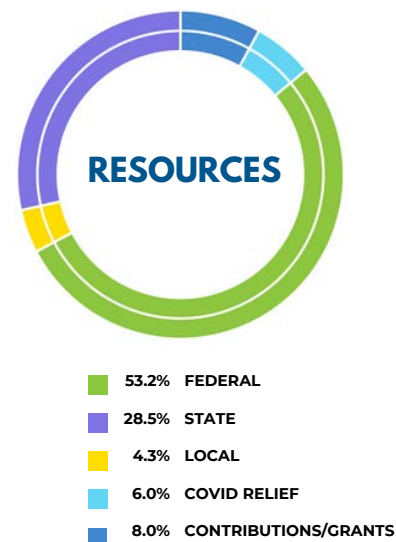
FINANCIAL OPERATIONS

Year ending June 30, 2021

Consolidated Statement of Financial Position

Assets		Liabilities	\$ 134,991
Current Assets		Net Assets	
Cash and cash equivalents	\$ 944,018	Without donor restrictions	1,427,293
Grants receivable	226,187	With donor restrictions	493,604
Prepaid expenses	50,414		
Total current assets	\$ 1,220,619	Total Net Assets	\$ 1,920,897
Other Assets:		Total Liabilities & Net Assets \$ 2,055,888	
Property held for resale	\$ 79,358		
Property & equipment*	755,911		
Total other assets	\$ 835,269		
Total assets	\$ 2,055,888		

*net of depreciation



Consolidated Statement of Activities

Revenue, Gains & Other Support	Without Donor Restrictions	With Donor Restrictions	Total
Grants from government agencies	\$ -	\$ 2,510,719	\$ 2,510,719
Interest	3,053	-	3,053
Program income	-	218,250	218,250
Section 8 fees	147,471	-	147,471
Rental income	-	99,606	99,606
Other income	3,062	7,100	10,162
Total	\$ 153,586	\$ 2,835,675	\$ 2,989,261
Net assets released from restrictions:			
Restrictions satisfied by payments	\$ 2,779,500	\$ (2,779,500)	\$ -
Total Revenue, Gains & Other Support	\$ 2,933,086	\$ 56,175	\$ 2,989,261
Expenses			
Program Services			
Assistance for low-income residents	\$ 2,421,189	\$ -	\$ 2,421,189
Supporting Services			
Management and general	413,432	-	413,432
Total Expenses	\$ 2,834,621	\$ -	\$ 2,834,621
Changes in Net Assets	\$ 98,465	\$ 56,175	\$ 154,640
Net Assets, Beginning of Year	\$ 1,328,828	\$ 437,429	\$ 1,766,257
Net Assets, End of Year	\$ 1,427,293	\$ 493,604	\$ 1,920,897



**THIS PAGE INTENTIONALLY
LEFT BLANK.**

skylinecap.org