



# CommunityAction

a Skyline CAP Newsletter

## CEO's Message

Looking through the stories in this edition of *CommunityAction*, I am reminded of what makes Skyline CAP so special: people coming together to create opportunities, strengthen communities, and improve lives. This issue highlights just a few examples of the incredible work taking place across our agency and the ways in which our team continues to find meaningful ways to address the needs of the communities we serve.

None of these accomplishments happen alone. I want to extend my sincere gratitude to our dedicated employees, Board of Directors, community partners, and countless others who make our work possible. Together, we are able to accomplish far more than any one organization could achieve alone.

As we begin developing Skyline CAP's next Strategic Plan, I am excited about the future and the opportunities ahead. While the challenges facing our communities are significant, I remain confident that, working together, we will continue helping people and changing lives.

*Simon*

## Feeling the Love: Reynolds Subaru Gives Back to Skyline CAP

Strong community partnerships help make Skyline CAP's work possible, and we are grateful to announce an \$18,000 donation from Reynolds Subaru through the annual Share the Love® Event. The donation will support two important Skyline CAP programs: Healthy Families, which provides in-home support and resources for parents and young children, and Emergency Home Repair, which helps low-income homeowners address urgent safety and housing issues.



*L-R: Anthony Jones, Subaru of America District Sales Manager; Darcy Serio, Reynolds Subaru Fixed Operations Director; Kim Rucker, Skyline CAP Housing Manager; Simon Fiscus, Skyline CAP CEO; John Reynolds, Reynolds Subaru Owner / Operator Dealer; Kelly Thornton, Skyline CAP Board member; Diane Rosson, Skyline CAP HR Director; Bryce Matthews, Reynolds Subaru Marketing and Digital/Love Promise Champion.*

Skyline CAP is deeply grateful for Reynolds Subaru's continued commitment to giving back and supporting local families. Partnerships like this demonstrate the powerful difference that can be made when businesses and community organizations work together to strengthen the communities they call home.

## Colorful Foods, Curious Minds: FLIP Launches in Skyline CAP Head Start Classrooms

Skyline CAP Head Start classrooms are excited to begin a new partnership with Feeding Greene through the launch of Food Literacy in Preschool (FLIP). This engaging program brings hands-on food literacy experiences directly into preschool classrooms to help children build healthy relationships with food, explore where food comes from, and learn about nutrition in fun and age-appropriate ways.



The engagement from students during the first lesson highlighted the positive impact programs like FLIP can have in early childhood classrooms. We are grateful for the partnership and support from Feeding Greene as we work together to promote healthy habits and lifelong learning opportunities for the children and families we serve.

# Introducing the Skyline CAP Home Visitors Program

## Strengthening Collaboration to Better Serve Families

Skyline CAP is excited to launch the new Home Visitors Program, a collaborative initiative that brings together staff who provide in-home services, including Head Start Family Advocates, Housing Counselors, and Healthy Families Family Support Specialists. While each role serves families in different ways, they share a common goal: helping individuals and families achieve stability, well-being, and long-term success.

By working more closely together, Home Visitors can improve communication and referrals, share effective case management strategies, identify emerging community needs, and provide more coordinated support to families. The program also supports a whole-family approach. Families often face multiple challenges at the same time, and collaboration among staff helps ensure they receive the resources and support they need to thrive.

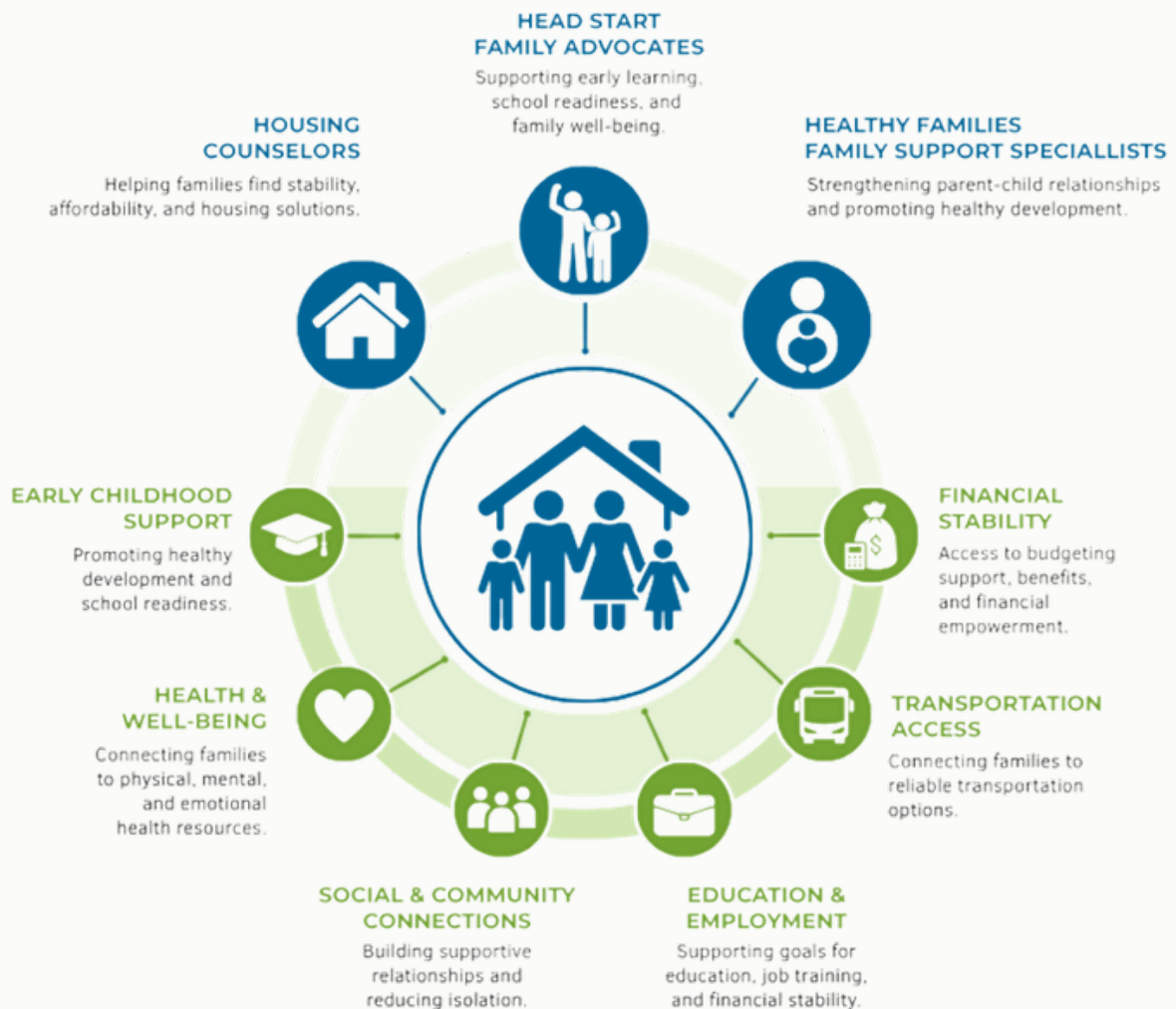
As the program develops, participants will continue sharing best practices, discussing community trends, and strengthening partnerships across programs. We look forward to the positive impact this collaboration will have on both our staff and the families we serve.



Members of Skyline CAP's Home Visitors Program team represent Head Start, Housing, and Healthy Families, working together to provide coordinated support for families.

“By bringing our home visiting teams together, we are creating stronger connections across programs and ensuring families receive the coordinated support they deserve.”

— Simon Fiscus, CEO



## Skyline CAP CEO Attends Ceremonial Signing of Virginia Childcare Legislation

Skyline CAP CEO Simon Fiscus recently joined fellow Head Start leaders and advocates at Virginia Governor Abigail Spanberger's ceremonial signing of bipartisan legislation designed to expand access to affordable childcare across the Commonwealth.

The event was especially meaningful given the findings of Skyline CAP's recently completed Community Needs Assessment, which identified affordable childcare as one of the top concerns voiced by families throughout our service area.

Affordable childcare is critical to helping parents remain in the workforce, supporting children's development, and strengthening local communities. Skyline CAP is encouraged to see leaders come together to address this important need and remains committed to supporting initiatives that improve opportunities for children and families across the region.



## Improving Access for Everyone

We recently updated our website to make it more accessible and user-friendly for all visitors. The improvements include clearer navigation, better color contrast, enhanced screen reader compatibility, and easier-to-read content across devices. These changes help ensure individuals of all abilities can more easily access important information, programs, and resources online.

Accessibility matters because everyone deserves equal access to services and support. As a community action agency, Skyline CAP remains committed to reducing barriers and creating a more inclusive experience for the communities we serve.



## Project Discovery Wraps Up Another Successful Year



Another successful year of Project Discovery has come to a close, providing local students with valuable opportunities to explore higher education and career pathways.

This year, 11 students participated in the program, including seven students from William Wetsel Middle School and four students from Madison County High School. Throughout the year, students visited several colleges and training centers, including The University of Virginia, University of Lynchburg, University of Richmond, Laurel Ridge Community College, and the Laurel Ridge Skilled Trades Center. These experiences allowed students to tour campuses, learn about admissions and financial aid, meet current students, and explore potential career paths.



The year concluded with a well-deserved celebration, as students gathered to enjoy ice cream and reflect on the experiences, friendships, and knowledge they gained through the program.

We are proud of our Project Discovery students and look forward to seeing where their educational journeys take them in the future.

## A Year of Learning, Growth, and Achievement



As another Head Start year comes to a close, we have much to celebrate. Throughout the school year, Skyline CAP's dedicated Head Start staff worked alongside families to help children learn, grow, and prepare for success in kindergarten and beyond.

This year, Head Start served 120 children across seven classrooms in Greene, Madison, Page, and Warren counties. Among those served were 17 children with disabilities, five families experiencing homelessness, and eight children in foster care. In addition, 61 enrolled families were receiving public assistance, highlighting Head Start's important role in supporting some of our communities' most vulnerable children and families.

While classroom learning is at the heart of Head Start, the program's impact extends far beyond academics. Children benefited from developmental screenings, health and dental services, nutritious meals, social-emotional support, and enriching experiences designed to foster confidence and curiosity. Families received support through goal setting, resource referrals, family engagement activities, and opportunities to strengthen their role as their child's first and most important teacher.

From first-day jitters to graduation celebrations, our classrooms were filled with learning, laughter, and milestones both big and small. Whether mastering new skills, making new friends, or gaining the confidence needed for the transition to kindergarten, our students made tremendous progress this year.

As we celebrate the accomplishments of our children and families, we also extend our heartfelt thanks to the teachers, family advocates, support staff, volunteers, and community partners who make Head Start possible. Together, we are helping build brighter futures, one child, one family, and one community at a time.



## Did You Know? Healthy Families Offers Free Support for Growing Families

Skyline CAP's Healthy Families program does much more than many people realize. A nationally recognized, evidence-based program with more than 500 sites nationwide, including 34 in Virginia, Healthy Families provides free, voluntary support to families from pregnancy until a child turns 5.

Family Support Specialists help parents support their child's development through developmental screenings, age-appropriate activities, parenting education, and connections to community resources. The program also helps families access services such as healthcare, housing assistance, food resources, and mental health support.

By strengthening parent-child relationships and promoting healthy development during a child's earliest years, Healthy Families helps build stronger families and communities.

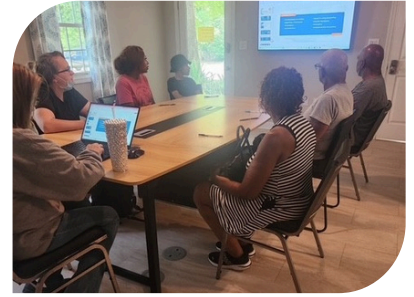
Healthy Families serves Fauquier, Madison, Orange, and Rappahannock counties. To learn more or make a referral, contact Cathy Benner at ext. 450 or Shelley Hensley at ext. 440, or visit [skylinecap.org/hf\\_referral](https://skylinecap.org/hf_referral).



## Building Financial Skills and Housing Stability Through Group Counseling

Skyline CAP's Housing Team is helping individuals and families build a stronger financial foundation through a growing series of group counseling workshops offered both at our Madison office and throughout the community in partnership with local organizations.

Led by Skyline CAP's HUD-certified housing counselors, these sessions cover topics such as budgeting, credit improvement, debt management, financial goal setting, tenant rights and responsibilities, and the homebuying process. The workshops are designed to equip participants with practical tools they can use to improve their financial well-being and make informed housing decisions.



Group counseling plays an important role in preventing housing instability by helping families develop the skills needed to manage financial challenges before they become housing crises. For others, the workshops serve as a first step toward achieving the dream of homeownership by providing guidance on saving for a down payment, improving credit, and navigating the mortgage process.

By offering these services both at Skyline CAP and through community partnerships, the Housing Team is able to reach more individuals and families where they live, work, and gather. Together, these efforts are helping create pathways to greater financial security, housing stability, and long-term success.

## Skyline CAP Expands Affordable Housing Portfolio

*Portfolio expands to 16 properties and 31 housing units.*



Skyline recently took another step forward in addressing one of our community's greatest challenges: affordable housing. The agency has purchased a new three-bedroom, two-bathroom townhouse in Barboursville that is currently under construction.



Once completed, the home will become part of Skyline's affordable rental housing portfolio, providing a safe, quality, and affordable place for a family to call home.

The purchase was made possible through HOME and Community Housing Development Organization (CHDO) funding disbursed by the Thomas Jefferson Planning District Commission (TJPDC). These resources allow Skyline CAP to continue expanding housing opportunities for families throughout the region.

This investment comes at an important time. Affordable housing has consistently been identified as a significant need in the communities we serve, and in Skyline CAP's most recent Community Needs Assessment, it emerged as the number one need across our service area.

With the addition of this townhouse, Skyline CAP's affordable housing portfolio now includes 16 properties with a total of 31 housing units. Each unit represents more than just housing, offering stability, opportunity, and a stronger foundation for the individuals and families who call it home.

### DID YOU KNOW?



For every **100** extremely low-income renters in Virginia, there are **only 35** affordable and available homes.

**100** EXTREMELY LOW-INCOME RENTERS



**35** AFFORDABLE & AVAILABLE RENTAL HOMES



Source: Virginia Housing Alliance



## KERRI BANKS

### ORIGINALLY FROM

Rappahannock County, VA

### EDUCATION

Ferrum College - B.S. in Liberal Studies with Concentrations in Agriculture, Biology, and Psychology

### OCCUPATION

- Co-owner and Administrative Manager, Triple F, LLC
- Wavery Yowell Elementary School, Teacher, 5<sup>th</sup> Grade

### CURRENT ROLES WITH SKYLINE CAP

- Secretary, Skyline CAP Board of Directors
- Member, Executive Committee

### COMMUNITY INVOLVEMENT

- Parent Representative, Virginia Head Start Association Board
- Family Council Representative
- Madison County Social Services Board
- Gifted Advisory Committee Member, Waverly Yowell Elementary School

## Getting to Know Our Leadership: a Conversation with Kerri Banks

Our Board Member Spotlight series continues with a closer look at a member whose leadership and service has helped guide Skyline CAP's mission for nearly a decade. Through her involvement with Head Start, Skyline CAP, and numerous local organizations, Kerri has dedicated herself to supporting children, families, and communities throughout the region.



Kerri Banks

### What factors influenced your decision to join the Skyline CAP Board of Directors?

I was introduced to Skyline CAP when my son joined Head Start seven years ago. I immediately wanted to become involved in any way possible and, with the guidance of Fay Butcher, I joined the Head Start Policy Council. During one of our first meetings, it was mentioned that there was a need for representation on the Skyline CAP Board. After becoming Chairperson of the Policy Council, I began attending Skyline CAP Board meetings and soon afterward became the Board Secretary.

I have always had a heart for serving others and stepping in where there is a need. Joining the Skyline CAP Board was a perfect opportunity to make a meaningful impact in the lives of families and communities across our service area.

### What is your favorite part of serving on Skyline CAP's board of directors?

I have served on the board for a number of years, and I truly enjoy every aspect of being involved. I appreciate having the opportunity to see firsthand how Skyline CAP impacts our communities and the people we serve. The amount of work the organization does throughout the region is truly amazing. It is a blessing to be part of an organization that is making such a positive difference in the lives of others.

### Are you involved with other organizations and, if yes, what are they?

Yes. Community involvement is very important to me, and I currently serve in several organizations and leadership roles, including:

- Secretary, Skyline CAP Board of Directors
- Parent Representative, Virginia Head Start Association Board
- Family Council Representative
- Madison County Social Services Board Representative
- Gifted Advisory Committee Member, Waverly Yowell Elementary School

These opportunities allow me to advocate for children and families while helping strengthen the community through collaboration and service.

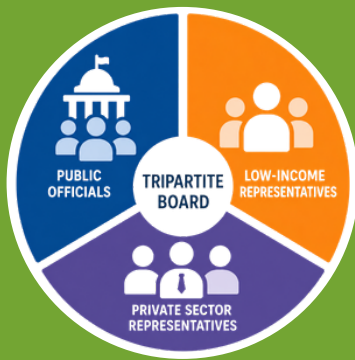
### Where are you from and where did you attend school?

I was born and raised in Rappahannock County, Virginia. I attended Rappahannock County Public Schools until high school, when I transferred to Liberty High School in Bealeton, Virginia. After graduating from high

*Continued on Page 6*

## UNDERSTANDING SKYLINE CAP'S TRIPARTITE BOARD

Did you know that Skyline CAP's Board of Directors is structured differently than many nonprofit boards?



As a Community Action Agency, Skyline CAP is required by federal law to maintain a tripartite board, ensuring that the people and communities we serve have a voice in agency governance. The board is made up of three sectors:

- Public Officials (or their representatives) – At least one-third of board members represent local government.
- Representatives of Low-Income Community – At least one-third are democratically selected representatives of low-income individuals and families.
- Representatives of the Private Sector – The remaining members represent business, education, faith-based organizations, community groups, and other key sectors.

This unique structure helps ensure that decisions are informed by community needs, public policy perspectives, and private-sector expertise. By bringing diverse voices to the table, Skyline CAP's Board helps guide the agency's mission throughout our communities.

*Continued From Page 5*

school, I continued my education at Ferrum College, where I earned a Bachelor of Science degree in Liberal Studies with concentrations in Agriculture, Biology, and Psychology.

### What is your current occupation?

My husband and I own and operate our small business, Triple F, LLC, which we established in 2018. As co-owners, we work together to ensure the success of the business, with me overseeing the administrative and organizational aspects while my husband manages daily operations. Running a business together has strengthened our appreciation for teamwork, dedication, and the importance of serving our customers and community. In 2026, I began a new chapter in my career as a 5th-grade teacher at WYES. Through teaching, I hope to make a positive impact on the lives of my students by supporting their academic growth, encouraging their confidence, and helping them reach their full potential.



*Waverly Yowell Elementary School recognized Kerri for quickly making a positive impact through her dedication to student success and commitment to creating a welcoming classroom where every student feels valued, supported, and encouraged to grow.*

### Who or what inspires you?

My Lord and Savior Jesus Christ and my family inspire me every day. They encourage me to serve others, strive to do my best in all aspects of life, and use my talents and opportunities to help those around me. Their support and example motivate me to continue seeking ways to make a positive difference in my community.

### Do you have any hobbies?

My favorite hobby is spending time with family and friends. I enjoy creating memories, sharing laughter, and making the most of every opportunity to be together. Life is too short to let precious moments pass by, and I cherish the relationships that bring joy and meaning to my life.

### What else would you like Skyline CAP employees to know about you?

Service has always been at the center of who I am. Whether through my work, volunteer roles, community organizations, or board service, I believe in helping where I am needed and supporting others whenever possible. I am grateful for every opportunity to serve alongside people who are committed to making our communities stronger.

### If you could say something to Skyline's staff, what would you like to say?

Thank you! You have no idea the impact you truly have on the communities and families you serve. The work you do is incredibly important, and it takes very special people to meet the needs of others every day. Your dedication, compassion, and commitment make a lasting difference in countless lives, and I am grateful to be associated with such an outstanding team.

### Our Vision:

All people within the Skyline CAP service area will have access to education, housing, economic opportunities and services necessary to become self-sufficient.



### Our Mission:

To strengthen our communities by improving the lives of those in need through actions promoting self-sufficiency. We seek to eliminate the impact of poverty by focusing on education, housing stability, and economic opportunities.